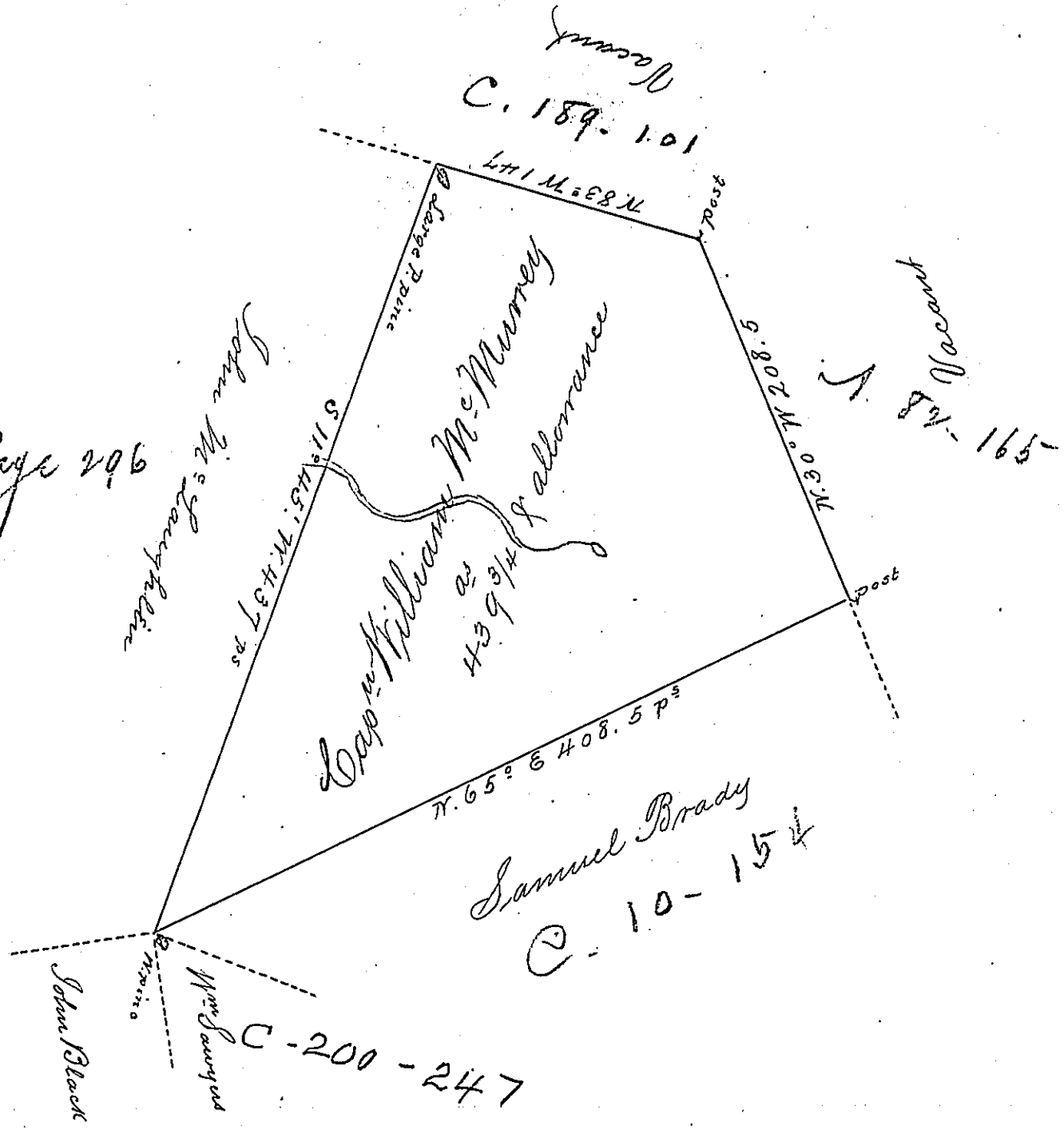


Page 296



A Draught of a tract of land called *Situate on*
 the waters of Catawissey joining Land Survd for John
 McLaughlen & others in Stoke Township Northum^d
 County containing four Hundred & thirty nine Acres ³/₄
 & allowance of Six p cent for Roads &c. Surveyed for Cap^l
 Wm McMurray the 26th Day of Nov^r 1784 in pursuance
 of a Warrant Dated the 1st day of July 1784
 by W^m Gray D.S.

To John Lukens Esq^t }
 Surv. Gen^l }

IN TESTIMONY that the above is a copy of the original remaining on file in the
 Department of Internal Affairs of Pennsylvania, made con-
 formably to an Act of Assembly approved the 16th day of
 February, 1833, I have hereunto set my Hand and caused
 the Seal of said Department to be affixed at Harrisburg, this
 twenty ninth day of April 1895.

Loane P. Brown
 Secretary of Internal Affairs